



# Hide In Your Pot

Music and lyrics by  
Iain Gilmour

♩ = 180

B $\flat$       B $\flat$ /D      E $\flat$       C/E      F      F

Musical notation for the first system, measures 1-6. The vocal line consists of rests. The piano accompaniment features chords in the right hand and single notes in the left hand.

7      B $\flat$       B $\flat$       B $\flat$       B $\flat$       B $\flat$       B $\flat$

When he sent Herc for the li - on,      Eu -  
This proved the king was a co - ward,

Musical notation for the second system, measures 7-12. The vocal line contains the lyrics. The piano accompaniment continues with chords and bass notes.

13      E $\flat$       E $\flat$       B $\flat$       B $\flat$       F

- ry - the - us thought that would be that.      He thought that  
For ev' - ry task fin - ished hence.      Herc was in -

Musical notation for the third system, measures 13-18. The vocal line contains the lyrics. The piano accompaniment continues with chords and bass notes.

2

18

F Bb Bb C C F

no - one, Could lay an - y blow on, That man - eat - ing beast of a cat.  
struc - ted, All work be con - duc - ted, Be - yond the per - im - e - ter fence.

24

F Bb Bb Bb Bb

So when he came back from Ty - rns,  
This made the king look quite fool - ish,

29

Eb Eb Bb Bb F

Boast - ing the score was one - nil. Some - thing went  
Peo - ple would gig - gle and stare. No - thing less

34

F Bb Bb C C F

ping, In the mind of the king, And he said he was feel - ing quite ill.  
cool - er, Than see - ing your ru - ler, All hid - den in Greekit - chen - ware.

40

F D D Gm Gm



He called for a pot made of bronze, When they  
There's ne- ver been a - no - ther boss, Who  
Don't be a - fraid if you're weak, Just

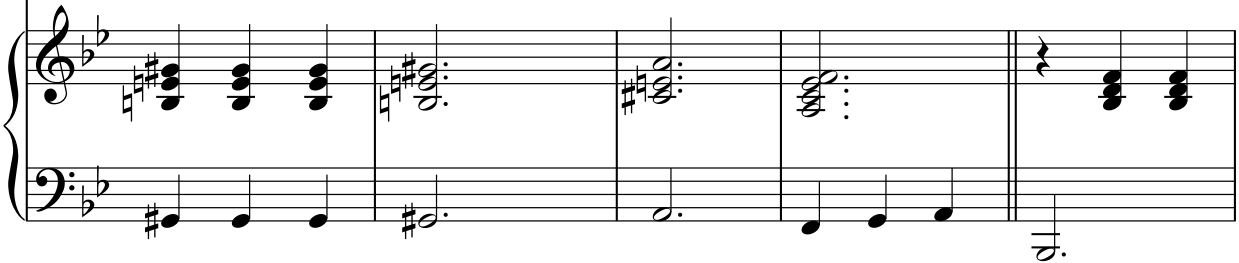


45

E/G# E/G# A F7 Bb



asked him, "What for?" he res - pon - ded: Hide in your  
made his H. Q. in a pi - thos.  
say that you're fee - ling a bit Greek.

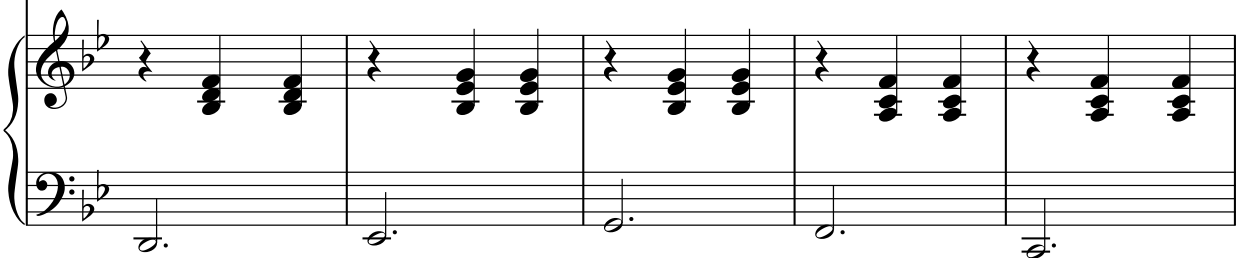


50

Bb Eb Eb F F



pot when you're frigh - tened, Hide in your pot when you're



4

55

B $\flat$  F B $\flat$  B $\flat$  E $\flat$  C/E

scared. If you sense a cri-tyos, Then reach for your pi-tyos, And

To Coda

1.

61

F F B $\flat$  B $\flat$  F F

no one will know that you're there!

67

B $\flat$  B $\flat$  2. B $\flat$  D.S. al Coda

there!

Coda

B $\flat$

there!

72

B $\flat$

F

F

B $\flat$

B $\flat$

Musical score for piano accompaniment, measures 72-76. The score is written for a grand piano with a treble and bass clef. The key signature is B-flat major (two flats). The melody line (treble clef) consists of five measures of whole rests. The bass line (bass clef) consists of five measures: measure 72 has a dotted half note B-flat; measure 73 has a dotted half note F; measure 74 has a dotted half note F; measure 75 has a dotted half note B-flat; measure 76 has a dotted half note B-flat. Above the treble clef staff, the chords B $\flat$ , F, F, B $\flat$ , and B $\flat$  are indicated above measures 72 through 76 respectively.